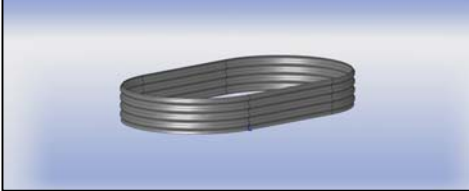


## Dura Life Secondary Farm Containment Z (In Ground) Posts

**\*\*\* All configurations include 25" tall, 12 ga. wall panels, "Z" (in ground) posts, all hardware and 30 mil liner.\*\*\***

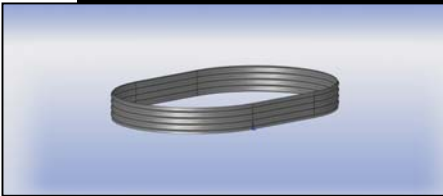
The following secondary containment systems are only a small sample of possible configurations. We can provide a multitude of custom configurations and quotes.

### **PART NO. SFC25120611 - OBROUND 6FT X 11FT**



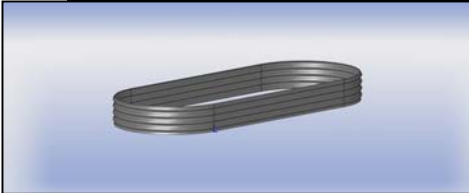
Capacity (Gallons)	558
--------------------	-----

### **PART NO. SFC25120914 - OBROUND 9FT X 14FT**



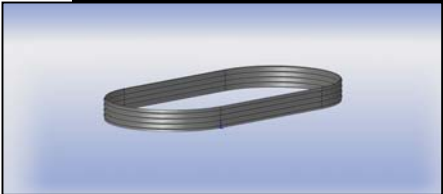
Capacity (Gallons)	1046
--------------------	------

### **PART NO. SFC25120615 - OBROUND 6FT X 15FT**



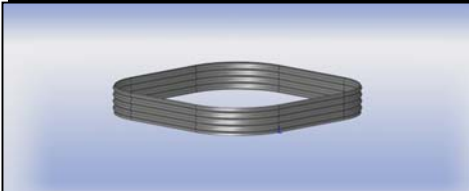
Capacity (Gallons)	837
--------------------	-----

### **PART NO. SFC25120918 - OBROUND 9FT X 18FT**



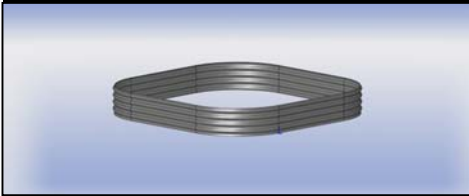
Capacity (Gallons)	1464
--------------------	------

### **PART NO. SFC25121111 - ROUND CORNER 11FT X 11FT**



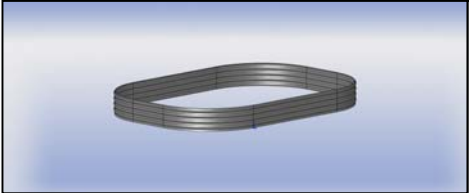
Capacity (Gallons)	1056
--------------------	------

**PART NO. SFC25121515 - ROUND CORNER 15FT X 15FT**



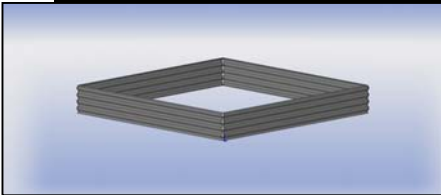
Capacity (Gallons)	2271
--------------------	------

**PART NO. SFC25121115 - ROUND CORNER 11FT X 15FT**



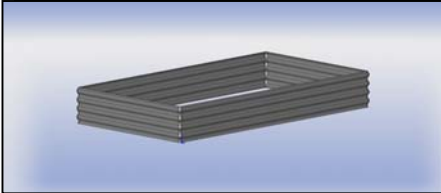
Capacity (Gallons)	1554
--------------------	------

**PART NO. SFC251211SQR - SQUARE 11FT X 11FT**



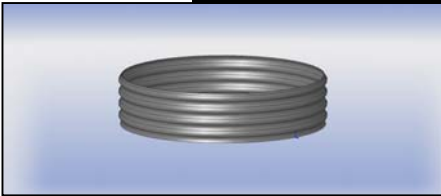
Capacity (Gallons)	1100
--------------------	------

**PART NO. SFC25120611RCT - RECTANGLE 6FT X 11FT**



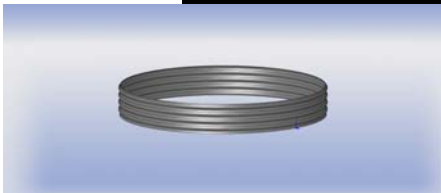
Capacity (Gallons)	600
--------------------	-----

**PART NO. SFC251206 - ROUND 6FT**



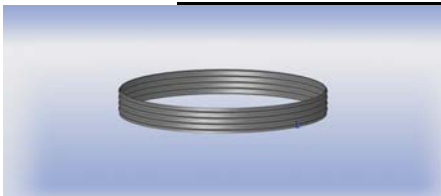
Capacity (Gallons)	279
--------------------	-----

**PART NO. SFC251209 - ROUND 9FT**



Capacity (Gallons)	627
--------------------	-----

**PART NO. SFC251212 - ROUND 12FT**



Capacity (Gallons)	1116
--------------------	------

**PART NO. SFC251215 - ROUND 15FT**



Capacity (Gallons)	1744
--------------------	------

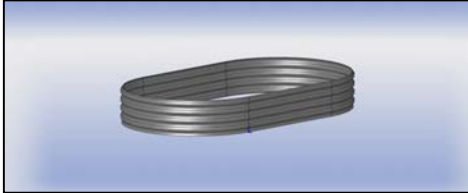
Note: Capacities listed above account for 1" free board at the top of the system and for a combined 8" of engineer fill above and below the liner. If panel embedment is needed, due to non-cohesive soils, capacities will be further reduced. Contact local authorities for free board requirements in your area. Free board requirements are to be based on 25yr/24hr average rainfall amounts. Contact local authorities also regarding required clearance distances between fuel tanks and containment side walls.

## Dura Life Secondary Farm Containment ZGD (Zero Ground Disturbance) Posts

\*\*\*All configurations include 25" tall, 12 ga. wall panels, ZGD (zero ground disturbance) posts, all hardware and 30 mil liner.\*\*\*

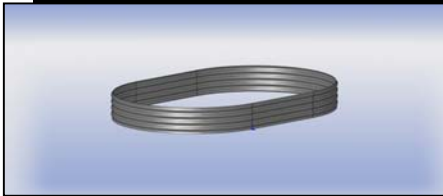
The following secondary containment systems are only a small sample of possible configurations. We can provide a multitude of custom configurations and quotes.

### PART NO. SFC25120611ZGD - OBROUND 6FT X 11FT



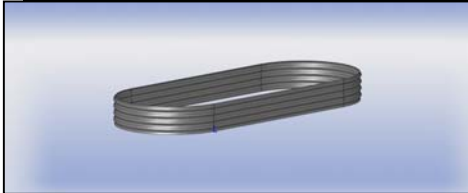
Capacity (Gallons)	558
--------------------	-----

### PART NO. SFC25120914ZGD - OBROUND 9FT X 14FT



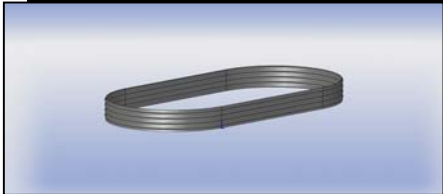
Capacity (Gallons)	1046
--------------------	------

### PART NO. SFC25120615ZGD - OBROUND 6FT X 15FT



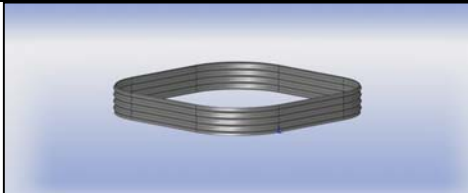
Capacity (Gallons)	837
--------------------	-----

### PART NO. SFC25120918ZGD - OBROUND 9FT X 18FT



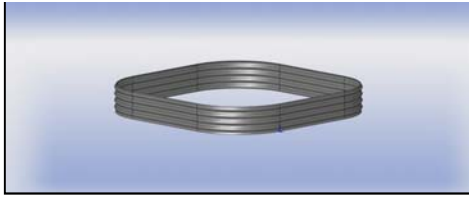
Capacity (Gallons)	1464
--------------------	------

### PART NO. SFC25121111ZGD - ROUND CORNER 11FT X 11FT



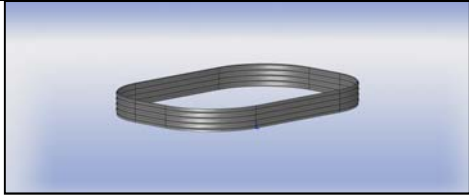
Capacity (Gallons)	1056
--------------------	------

### PART NO. SFC25121515ZGD - ROUND CORNER 15FT X 15FT



Capacity (Gallons)	2271
--------------------	------

PART NO. SFC25121115ZGD - ROUND CORNER 11FT X 15FT



Capacity (Gallons)	1554
--------------------	------

Note: Capacities listed above account for 1" free board at the top of the system and for a combined 8" of engineer fill above and below the liner. If panel embedment is needed, due to non-cohesive soils, capacities will be further reduced. Contact local authorities for free board requirements in your area. Free board requirements are to be based on 25yr/24hr average rainfall amounts. Contact local authorities also regarding required clearance distances between fuel tanks and containment side walls.